



**Quit working so hard...
USE A DRAGON SCREED!**

Visit our Facebook page to watch demo videos. See p. 15 for \$1,000 credit on purchase.



Financing Deal p. 2
Diamond Blades p. 3
Fall/Winter Gear p. 8

Custom Printed Hard Hats p. 9
Early Bird Poly Special p. 13
Milwaukee Trade-Ins p. 15

YOUR #1 SOURCE
FOR CONSTRUCTION EQUIPMENT & SUPPLIES

See more of our products and information online @ FarrellEquipment.com

TAKE NOW PAY LATER

TAKE HOME 1 OF THESE



Plate Compactor w/5.5HP
Honda - 3250lb Force (#GX160)



36" Power Trowel W/ GX160
Honda & Standard Handle
Add \$200 for QuickPitch Handle



Husqvarna Soff-Cut X-150 Prowler Gas
Concrete Saw w/Kohler Motor

PLUS OVER \$5,000 OF CONCRETE SUPPLIES

Choose from:

- Roll 20'x100' 6 mil Poly
- 1/2"x4"x5' Nomaflex expansion joint
- 1/2"x4"x5' Fiber expansion joint
- 14" Badger Dry Diamond Blade
- 14" Farrell Green and Gold Diamond Blade
- 5 gal. pail AS-1 Curing & Sealing Agent
- 55 gal. drum AS-1 Curing & Sealing Agent
- 10-pack 6" Soff-Cut blades
- 6" Soff-Cut blade
- 1/2"x10" "L" shape anchor bolts 50 pc box
- 1/2"x10" galv. "L" shape anchor bolts 50 pc box
- 55 gal. drum Farrell Supreme Form Release
- 50 lb box 8 Penny double head nails
- 50 lb box 16 Penny double head nails
- 3/4"x24" Farrell nail stake w/holes
- 3/4"x30" Farrell nail stake w/holes
- 1"x3"x18" wood stakes 50 pc box
- 1"x3"x24" wood stakes 50 pc box
- 3/8"x20' #3 Basalt rebar
- 2"x4"x8' Sheet Certifoam 25 (buy in 48 pc qty)
- Sterling metal tub wheelbarrow w/air tire
- Sterling metal tub wheelbarrow w/No-Flat tire
- Chapin Sprayer 1949
- 32"x16" nominal slider basement window
- 48"x48" full slider basement window
- Topcon Laser w/ LS-80L Detector and Bracket
- Seymour long handle sq or rd point shovel
- 4"x100' perforated drain tile without sock
- 4"x100' perforated drain tile with sock
- 1 in. Bosch Bulldog™ Xtreme Rotary Hammer

DON'T PAY ANYTHING

until

DECEMBER 10!

WE STOCK EVERY BLADE YOU NEED

Cured Concrete



**FARRELL
COST CUTTER**
14" single & 10-packs



VH-5 SERIES
12" single packs &
14" single and 5-packs



VANGUARD HS-5
Available in 12" &
14" single packs



**FARRELL
BADGER BLADE**
Available in 12", 14",
& 16" single packs



**FARRELL
GREEN AND GOLD**
Available in 12", 14",
& 16" single packs

← **GOOD** ————— **BETTER** ————— **BEST** →

Asphalt & Green Concrete

**VH-10
SERIES**
14" single packs

**VANGUARD
HS-10**
14" single packs

**FARRELL
BLACK
PREMIUM**
Available in 12" &
14" single packs

FEATURED DIAMOND BLADES

GREAT DEALS!



**14" Vari-Cut
Diamond Blade**
HUS01-542751359



**14" "Badger" Dry
Diamond Blade**
HUS01-579860101



**14" "Brick Buster"
Diamond Blade**
HUS01-582577701



**14" "Block Buster"
Diamond Blade**
HUS01-582578101

Heavy Duty Release Agent



**Spray On Equipment Before Use
& Concrete Washes Right Off**

Super Quick Concrete Shield (Non-Stick Coating) 5 Gallon Pail

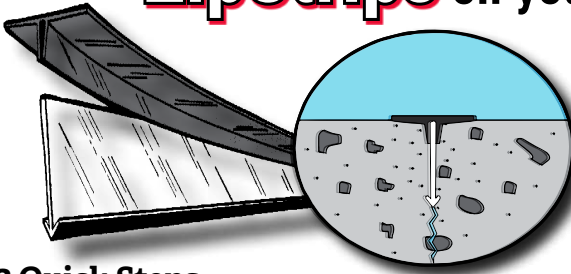
- Heavy duty and very durable
- Keeps trucks and equipment clean and looking new
- Protects against rust, corrosion, and oxidation

BUL2000



ZIPSTRIPS

Try **ZipStrips** on your next graded slab!



- Cheaper than sawing
- Finished concrete only contains hairline crack
- Eliminate the need to saw joints in your concrete!

3 Quick Steps

- 1** Push ZipStrip into wet concrete
- 2** Zip off the top piece
- 3** Finish smooth over the top of ZipStrip

STRAIGHT HAIRLINE CRACK OVER THE TOP OF THE CONCRETE

Product #	Depth	For Slabs
SF1001	1"	3" to 6" thick
SF1003	1-1/2"	6" to 8" thick
SF1005	2"	Over 8" thick

- 10 ft length
- 50 pieces / box
- 500 ft / box

LANDSCAPING

Code-Compliant Fence Post Anchoring System

Sleeve-It

- Compatible with most fences
- Maximizes land use
- Lightweight & stackable
- Easy to install



Simple Construction:

- 1** Install the cantilevered Sleeve-It units near the elevation of the top of the wall
- 2** Fill and compact soil to the top of the sleeve
- 3** Leave the disposable lid on the sleeve until the fence installer places the fence post in the sleeve and fills with concrete
- 4** The fencing contractor finished the fence, supported by the buried Sleeve-It System

SLEEVE-IT
 by STRATA

Post Driver



Multi Pro Gas Powered Post Driver Up To 2 3/8" Diameter
 GPD-45



CLEAN THE DUST OUT OF THE AIR ON YOUR JOB SITE!

AIR SCRUBBERS



Use Wherever Portable, Efficient HEPA Filtration is Needed!

DefendAir® HEPA 500 DRIF284

- Includes one primary HEPA filter and one prefilter (30%)
- Daisy chain capability-link up to 4 units on 1 outlet
- Stackable, lightweight, and easily transportable
- Variable CFM on each unit-up to 2000 CFM per 15-amp circuit



DRIF271
DefendAir® 2nd Stage Pre-Filter for 500 Air Scrubber



DRIF321
DefendAir® HEPA 500 Filter

**A600 Air Scrubber
120 Volt Single
Phase**

- Durable design
- High efficiency over time with two-stage air filtration
- Warning lights and sound
- Easy to clean HEPA filter



HUS07-967664401

**Husqvarna S 26 Single-Phase
HEPA Dust Extractor**

- For building, grinding plaster, and concrete dust
- Equipped with two tested and certified HEPA H13 filters
- Puncture free, front-locking, non-marking wheels
- Simple, dust-free bag changes
- Easy to transport



HUS07-967663901



**Conical Pre-Filter
For S-26 Vacuum**

ZHUS590430201

**Husqvarna Hepa S-Line
Filter for S 26 Vacuum**



ZHUS590429801



Finishing Shoes

Spiked Pro Concrete Finishing Shoes

Use When Applying:

- ◆ Epoxy
- ◆ Resurfacers
- ◆ Stampable Overlay



SHO2000 (Large, size 9-11)
SHO2100 (Extra large, size 11+)

Flat Bottom Concrete Finishing Shoes

BIGGER FOOTPRINT & FEWER MARKS when troweling concrete!



SHO1000 (Large, size 9-11)
SHO1100 (Extra large, size 11+)



POWERTOOLS

JET



**20" FLOOR
DRILL PRESS**
115/230V 1PH
JET06-354170



POWERMATIC

**10% OFF
DUST COLLECTORS**

**#PM1300
TX-BK
TURBO
CONE DUST
COLLECTOR**

JET06-
1791078 K

10% off
Powermatic
Dust Collection
(through 9/30)



**10% off
ALL JET PRODUCTS**

**7" X 12" HORIZONTAL /
VERTICAL BANDSAW
NEW FEATURES!**

- Increased stand width & height
- Built-in storage cabinet & chip tray
- Rapid action vise miters to 45°

JET06-414559



10% off JET National Sale - All SKUS
(9/13-9/30)



**POWERMATIC 6" JOINTER W/
HELICAL CUTTERHEAD**



JET06-
1791317 K



NOW SELLING MINNICH CONCRETE EQUIPMENT

Lightweight, Durable, and Versatile

**MUNNICH STINGER ELECTRIC FLEX
SHAFT CONCRETE VIBRATOR**



MIN2010

**BACKPACK VIBRATOR W/ HONDA ENGINE
W/ 7' CORE & CASING & 1 3/4" HEAD**



MIN3000

SCAFFOLD & ACCESS EQUIPMENT

FRAMES & ACCESSORIES



WC015500

WR SERIES 5' x 51" SINGLE LADDER FRAME

- Ideal for construction, maintenance, and general applications
- Can be used with base plates, casters (made for scaffolding), Casters with Screw jacks and sockets or screw jacks with base plates
- Recommended where the maximum load capacity does not exceed 50 lbs. per square foot uniformly distributed over a 5' X 7' or 5' x 10' area
- 5' wide frames are measured center leg to center leg
- Includes coupling pin & spring retainer

ZIPWALL

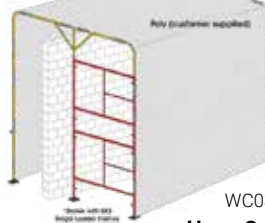
ZipWall®
Standard
Zippers
(2 per Box)



WALA22

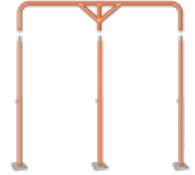
Create entryway in plastic barrier **FAST & EASY**

EASILY FORM A PROTECTIVE WORK AREA



WC039218

Hoop Canopy

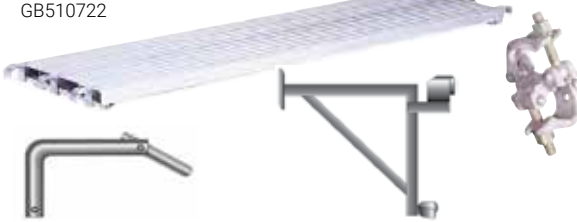


WC039219

Telescoping Legs

19 1/4"x7' ALL ALUMINUM TRIPLE HOOK DECK

GB510722



TOGGLE PINS
WC020000

SW SERIES 20" SIDE BRACKET
WC033220

RIGHT ANGLE CLAMPS
WC042202

18" ADJUSTING SCREW W/ BASE PLATE
WC030518



7' BRACE FOR 5' END FRAME (2 HOLE)
WC024407

MADE IN U.S.A.



DON'T LET THE COLD SLOW YOU DOWN!

See your sales rep for huge **PRESEASON DEALS!**

Roll 12' x 100' Reinforced Poly
MK2012

ALSO AVAILABLE IN 16', 20', 24', 32', AND 40', CALL FOR PRICES!

Wind Clips
Fits any commercial poly enclosure material
WD1000



PLANKS

**ALUMINUM PLANKS
2-PERSON 500 LBS.**



12" X 16'

WER04-2316

12" X 20'

WER04-2320

12" X 24'

WER04-2324

20" X 16'

WER04-2516

20" X 20'

WER04-2520



EARLY BIRD SPECIALS

Fall/Winter Gear

BUY NOW SAVE MORE



**Class 3
Multi-Color Bomber Jacket**

- Quilted liner so it can be easily put on and taken off

RDN02-SJ12-3ZMS



**Class 3
Hi-Viz Lime Bomber Jacket**

- Features attached hood and inner and outer pockets.
- 2" silver reflective tape for hi-viz

RDN02-SJ11QB-3ZGS



**Class 3
Hi-Viz 3-in-1 Lime Bomber Jacket**

- Features attached hood and inner and outer pockets
- 2" silver reflective tape for hi-viz

RDN02-SJ210B-3ZGS



**Ergodyne 16950 3-Layer
Fleece Lined Hard Hat Liner**

- FR treated for safety
- Elastic gap control at forehead

ERG16950



Winter Hand Protection



PIP-41-1420



Hi-Viz Lime Knit Gloves
Available: L, XL

- Seamless construction for comfort, acrylic material for economical cold weather protection.



Power Grab Thermo Gloves
Available: L, XL MJ41-1430

PERFECT FOR

- ◆ FISHING
- ◆ MEAT PROCESSING
- ◆ WINTER CONSTRUCTION



SEPTEMBER SPECIAL

Kinco Orange Thermal Lined Gloves w/ Cuff
MJ1938



Available in: L, XL



- Golden grain pigskin protects the palm with exceptional durability
- Remains soft & flexible after getting wet
- 3M Scotchlite reflective knuckle strap
- Heatkeep thermal lining
- Laminated with soft TR2 inner lining



#99PLUS-BLK Tool Handz Gloves

Available in:
M, L, XL, 2XL
REV1000



#99ACE-PW Tool Hands Frost Thinsulate Gloves

Available in:
M, L, XL, 2XL
REV2000

Ask about quantity discounts!

G-Tek Maxiflex Nylon Glove w/ Nitrile Grip

\$3.25 ea. on quantities less than 144



Available: M, L, XL, 2XL
MJ34-874



CUSTOMIZE YOUR PRODUCTS

FARRELL EXCLUSIVE DEAL **CUSTOM HARD HATS!**

Call your sales rep for pricing on having your logo imprinted on your hard hats!



Americana Hard Hat
ERB06-1936

- Meets ANSI/ISEA Z89.1, Type 1, Class C, E & G requirements
- Features short peak and trim profile

Available colors:



Americana Vented Hard Hat
ERB06-1945

- Meets ANSI/ISEA Z89.1, Type 1, Class C requirements
- Vents to increase circulation and keep your head cool and comfortable

Available colors:



Americana Vented Hard Hat, Full Brim
ERB06-19431

- Meets ANSI/ISEA Z89.1, Type 1, Class C requirements
- Vents to increase circulation and keep your head cool and comfortable

Available colors:



Hi-Viz T-Shirts



Hi-Viz Yellow Class 2 T-Shirt

M, L, XL, 2XL, 3XL

Hi-Viz Sweatshirts



Class 3 Hi-Viz Lime Hooded Sweatshirt

ERB05-61541

L, XL

Ask your sales rep about deals on customizing your ERB Hi-Viz sweatshirts, t-shirts, and jackets!



SAFETY GLASSES

Black Frame & Clear Lens
JAC01-3000354



Black Frame & Clear Anti-Fog
JAC01-3000355



Red Frame & Smoke Lens
JAC01-3020709



Camo Frame & Clear Anti-Fog
JAC01-3020706



Black Frame & Smoke Mirror
JAC01-3000356



Camo Frame & Smoke Anti-Fog
JAC01-3020707



Ask about bulk pricing!



PROTECTIVE MATS



Most versatile ground cover mat in the industry

36" x 8' TrakMats™ SVETM3696-G

- Made from 100% recycled high density polyethylene plastic
- Designed to protect lawns & landscape from damage when vehicles drive on them

POWER BUGGIES

Take home TODAY

16 Cu. Ft. Power Buggy w/ Foam-Filled Tires

- Heavy-duty frame with low center of gravity
- Honda GX390 engine with recoil start
- Large 5.5-gallon fuel tank for extended uninterrupted service
- Increased stability and traction



WBH-16F

THAWZALLS

THAWZALL

Model No. TCH250



CONTACT YOUR SALESMAN TODAY FOR HUGE DISCOUNTS!

CURING, SEALING, & REPAIR PRODUCTS

**TIME TO SEAL FOR WINTER
PROTECTION—CALL YOUR SALES
REP FOR KILLER DEALS ON SEALER!**

**AS-1 Curing
& Sealing
Agent 1315
1 Gal. Jug**

TKAS101



**AS-1 Curing
& Sealing
Agent 1315
5 Gal. Pail**

TKAS105



**AS-1 Curing
& Sealing
Agent 1315
55 Gal. Drum**

TKAS155



Use for curing, sealing abrasion resistance, UV resistance, and chemical resistance on freshly placed and/or existing concrete or masonry in interior or exterior spaces. **Coverage: 300-600 sq ft per gal.**

**Vulkem 45 SSL Caulk
28 Oz. Tube**

Use in expansion joints in sidewalks, swimming pool decks, plazas, floors and any other horizontal surfaces with slopes up to 6%.

- Semi-self-leveling
- Traffic-rated
- Provides exceptional wear and tear resistance required in high traffic areas
- Primerless adhesion

TR3100



**3/8" X 300 Ft. Bag of
Closed Cell SOF® Rod**

Comprised of both open and closed cells that will not out-gas when ruptured

NOM3000



- Sizes available:**
- 3/8" x 300'
 - 7/8" x 100'
 - 5/8" x 150'
 - 1-1/8" x 75'

**TK-26 UV Concrete Sealer
5 Gal. Pail (left pail)**

TK2605

A special formula of chlorinated rubber and epoxy that cures, seals, and hardens concrete in one easy application. Retains up to 98% moisture while resisting discoloration. **Coverage: 300-600 sq ft per gal.**



TK290FS05

TK-290 Final Seal 5 Gal. Pail (right pail)

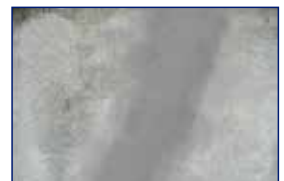
Eliminates moisture engulfing substrate, and prevents spalling, freeze/thaw damage, and rebar corrosion. Will not allow water to enter but lets moisture vapor pass out of the substrate. **Coverage: 125 sq ft per gal.**

Repair basement cracks in less than an hour!



**TK-Hydro Seal
Concrete Crack
Repair Kit**

TKCRACKREPAIRKIT



WIRELESS SALT SPREADER

SNX01-SR-210

#SR-210 Wireless Bagged Rock Salt Spreader



FEATURES



Wireless Controls

This pocket-sized, wireless key fob offers two spinner speed settings for easy operation.



Spinner Motor

The spinner motor transmission is completely electric-powered.



Vertical High-Flow Auger

Spread bagged rock salt accurately, thanks to the vertical high-flow auger

CHAPIN SALT SPREADERS

CH82108

Stainless Steel Frame Spreader w/grate and cover (100 lb capacity)



Painted Spreader w/grate and cover (80 lb capacity)
CH80088



CALCIUM CHLORIDE

Pour Directly Into Your Redi-Mix!



DOW2000

Calcium Chloride Flakes (50 lb bag)

- Reduces concrete set time
- Improves workability
- Increases concrete strength

Calcium Chloride Flakes (25 lb bag)

HEAT-SEALED WATERPROOF BAG

DOW1000



ICE MELT

"Lightning Fast" Ice Melt (50 lb bag)

DOW3000



JOB SITE HEATING

Proven High Quality!

Max Katz[®] INSULATED BLANKETS

Call your sales rep for best prices.

SEE THE DIFFERENCE!

COMPETITORS

Max Katz[®]



**3X THE
INSULATION!**

1/2" Insulated Blanket | MK001
3/4" Insulated Blanket | MK002



LB WHITE Heaters

RENT OR BUY!



LBW-NORSEMAN 250
**#250 Norseman 250,000 BTU
LP Gas Salamander Heater
W/Regulator**



LBW-PREMIER 170DF
**#170DF Premier 170,000
BTU "Dual Fuel" Ductable
Heater w/Thermostat**



LBW-TRADESMAN #K175
**#K175 Tradesman 175,000 BTU
Kerosene Heater w/Thermostat**



LBW-PREMIER 350DF
**#350DF Premier 350,000
BTU LP/Natural Gas Heater**



LBW-TRADESMAN #400
**#400 Tradesman 400,000 BTU LP
Gas Heater w/Regulator**



**#500 DF Norseman Indirect-Fired Heater 420,000 BTU Output
LBW-FOREMAN-500-DF**



HEALL16JX2B



**Heatron Volcano
Heating Rod**

- Heats all day while you work!
- Heats from the ground and from the water barrel in the center of the material



FALL CLEANUP

Cordless Leaf Blower

M18 FUEL™ Blower

MIL01-2724-20

- No Cords
- Up to 30% quieter than gas
- Ambidextrous cruise control
- Variable speed trigger
- Fully compatible with 125+ solutions on the M18™ system



(Tool only)



Backpack Blower

Stihl BR 800 X MAGNUM®
STL04-BR800X



STIHL®

Shovels

LONG HANDLE ROUND POINT FIBERGLASS SHOVEL

SRS700



LONG HANDLE SQUARE POINT FIBERGLASS SHOVEL

SRS701



SEYMOUR

WOOD HANDLE ROUND POINT SHOVEL 45"

AS1564100



WOOD HANDLE SQUARE POINT SHOVEL 47"

AS1564200



AMES
EST. 1914

Wheelbarrows



COMES FULLY ASSEMBLED!

METAL TUB W/ AIR TIRE

ST530-16-42DB

6 cu. ft. steel tray and reliable air tire



HEAVY DUTY CONTRACTOR WHEELBARROW



ST530-16-42DB-FF

Narrow 6 cu. ft. steel tray with **GUARANTEED** Poly-U No-Flat tire





M18 FUEL™ TRADE-IN DEAL

GET \$100 OFF

with purchase of qualifying M18 Fuel™ Kit and trade in a professional grade cordless tool with (2) batteries



M18 FUEL™ Hammer Drill/SURGE™ Combo Kit
MIL01-2999-22



M18 FUEL™ Hammer Drill/Impact Combo Kit
MIL01-2997-22



M18 FUEL™ 1/2" Hammer Drill/Driver Kit
MIL01-2804-22



M18 FUEL™ 1/4" Hex Impact Driver Kit
MIL01-2853-22

GET \$150 OFF

with purchase of qualifying M18 Fuel™ Kit and trade in a professional grade cordless tool with (2) batteries

Valid through 10/31/19 or while supplies last!
Contact your Farrell sales rep for full listing of qualifying trade-ins.

M18 FUEL™ 5-Tool Combo Kit
MIL01-2997-25



Includes: 1/2" hammer drill/driver, 1/4" hex impact driver, SAWZALL® recip saw, 6-1/2" circular saw, and LED work light, (2) 5.0 AH Batteries, Multi-Voltage Charger, and Bag

M18 FUEL™ 7-Tool Combo Kit
MIL01-2997-27



Includes: 1/2" hammer drill/driver, 1/4" hex impact driver, SAWZALL® recip saw, 1/2" Mid-Torque Impact Wrench, 4-1/2"/5" Grinder, 6-1/2" circular saw, and LED work light, (2) 5.0 AH Batteries, Multi-Voltage Charger, and Bag

NEW KIT! IN-LINE VERSION
of the DRAGON SCREED Buy or Rent



Offset parts not included in kit.

MAKE CONCRETE POURING EASY!

PRICES VALID: SEPT 16-OCT 18, 2019

 FOR A LISTING OF PRODUCTS AND INFO
Farrellequipment.com

Scissors Lift

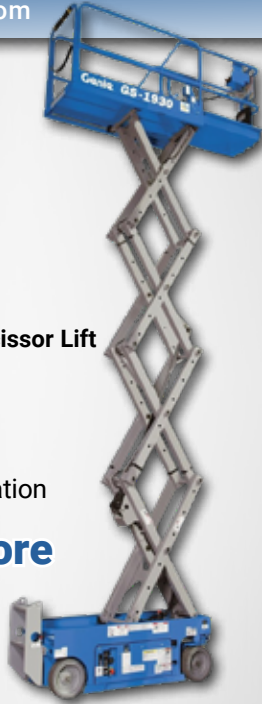
Genie® GS™ 1930 Slab Scissor Lift

- Easy to maneuver in tight spaces
- 25-ft working height
- Boasts quiet electric, zero-emissions operation

Get yours before they're gone!

Genie
A TEREX COMPANY

GENGS1930



PRSRT STD
U.S. POSTAGE
PAID
Eau Claire, WI
Permit No. 1557

1510 N. Hastings Way
Eau Claire, WI 54703



BOSCH BRUTE™ BLOWOUT PRICING!



Brute™ Breaker Hammer with Basic Cart BOS01-BH2760VCB



Brute™ Turbo Breaker Hammer with Deluxe Cart BOS01-BH2770VCD



1 in. SDS-plus® Bulldog™ Xtreme Rotary Hammer
BOS01-11255VSR



1-9/16 in. SDS-max® Combination Hammer
BOS01-RH540M



Trade Customs

If any errors or misprints have escaped our checkers and printers, we are not responsible for them, and they are subject to our correction. All information contained in this catalog, pertaining to strengths and proper working loads of material, tools or machines is derived from information compiled by the manufacturers for the convenience of the buyer. We assume no responsibility for the accuracy of this information. We are not responsible for printing errors in prices. Prices subject to change at any time. Illustrations are subject to modification. All references in this catalog are for description only and are not representations or warranties of any kind or nature. Copyright © 2019 by Farrell Equipment & Supply, Inc.

7 LOCATIONS • M - F: 7:00 am - 5:00 pm • SATURDAYS (EC/LAX Stores Only): 8:00 am - Noon

EAU CLAIRE
715-835-4334

APPLETON
920-903-1985

LA CROSSE
608-796-9300

MADISON
608-222-5372

ROCHESTER
507-252-0234

ST. PAUL
651-756-8932

WAUSAU
715-355-8300

CONTRACTORS' EQUIPMENT • POWER TOOLS • CONSTRUCTION SUPPLIES